

Dr Gabrielle McKee
Director of Research

INTRODUCTION TO RESEARCH IN THE SCHOOL OF NURSING AND MIDWIFERY



TRINITY COLLEGE DUBLIN
COLÁISTE NA TRÍONÓIDE, BAILE ÁTHA CLIATH

THE
UNIVERSITY
OF DUBLIN

We Believe

In having high social relevance in what we do at all levels of research

We aim to conduct research that is user led and innovative and which translates into better outcomes, healthcare practices, services and policy



Our Research

Anticipates the changes in society

Our research agenda have evolved and adapted to meet current and future healthcare needs



RESEARCH FUNDING SOURCES IN PAST 2 YEARS

The
ATLANTIC
Philanthropies



GLEN
GAY AND LESBIAN EQUALITY NETWORK
working for equality for lesbian, gay and bisexual people in Ireland



NDA
National Disability Authority
Údarás Náisiúnta Míchumais



HS
Feidhmeannacht na Seirbhíse Sláinte
Health Service Executive



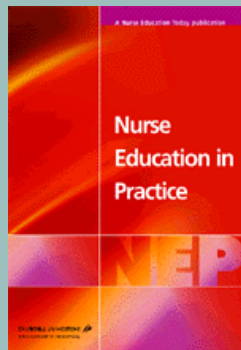
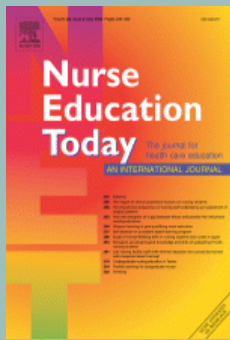
MHC
Coimisiún Meabhair-Sláinte
Mental Health Commission



The Adelaide and Meath Hospital, Dublin
Incorporating the National Children's Hospital



PUBLISHED IN KEY JOURNALS



RESEARCH MATRIX

Aging and intellectual disabilities

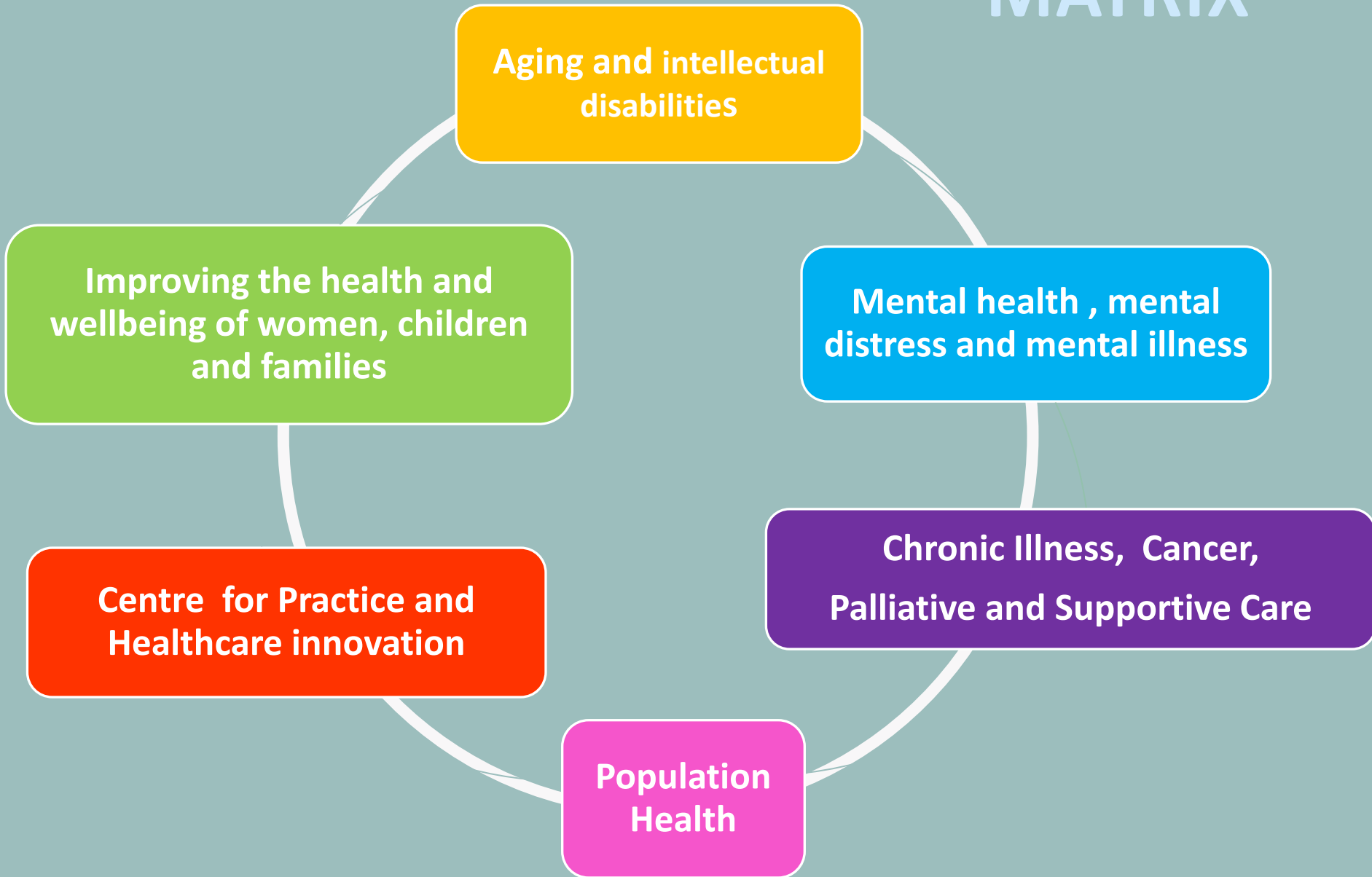
Improving the health and wellbeing of women, children and families

Mental health , mental distress and mental illness

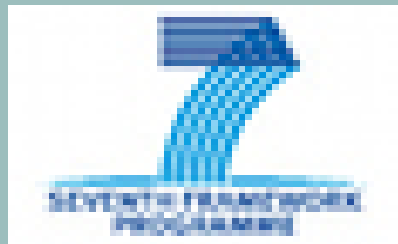
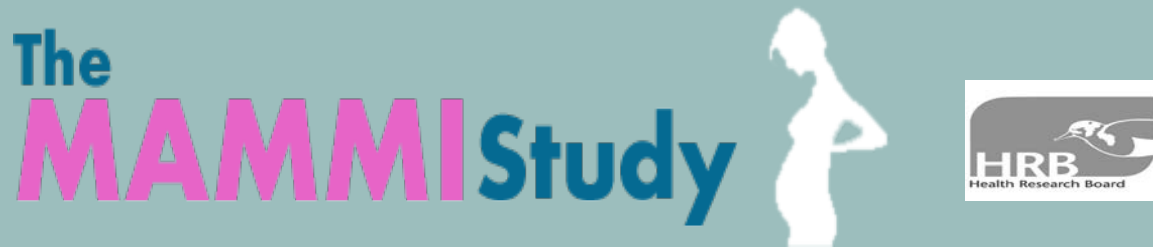
Centre for Practice and Healthcare innovation

Chronic Illness, Cancer, Palliative and Supportive Care

Population Health



SUBTHEME : CHILDBIRTH, REPRODUCTION AND MATERNITY CARE



Prof Cecily Begley

The relationship between body mass index and health-related quality of life in urban disadvantaged children

Ciara Wynne · Catherine Comiskey ·
Eleanor Hollywood · Mary Brigid Quirke ·
Karin O'Sullivan · Sinéad McGilloway

Accepted: 21 January 2014 / Published online: 29 January 2014
© Springer International Publishing Switzerland 2014

Abstract

Introduction The study's aim was to establish, for children living in urban disadvantage, the nature and extent of the relationship between body mass index (BMI) and health-related quality of life (HRQoL), including the role of individual and family factors in influencing this relationship.

Methods Within the context of a longitudinal design, 255 children aged 7–12 years (50 % male) self-reported their HRQoL (Kidscreen-27) and had their height and weight measured at year one and two. One parent/guardian for each child was also assessed at year one with the OSLO Social Support Scale and Hospital Anxiety and Depression

school well-being than children whose parents were not depressed.

Conclusion The findings suggest that obesity programmes could aim to prevent/reduce obesity and optimise HRQoL in urban disadvantaged preadolescent children whilst also targeting parental mental health difficulties. Future research should examine mediators of the effect of BMI on HRQoL.

Keywords Health-related quality of life · Body mass index · Obesity · Children · Disadvantage · Urban · Moderation

AGING



Prof Mary McCarron

IDS TILDA

The Intellectual Disability Supplement to The Irish Longitudinal Study on Ageing

MENTAL HEALTH

Journal of Psychiatric and Mental Health Nursing, 2014, 21, 189–196



'We have got the tools': Qualitative evaluation of a mental health Wellness Recovery Action Planning (WRAP) education programme in Ireland

B. KEOGH¹ RPN, BNS, MSC, PHD, A. HIGGINS² RPN, RGN, BNS, RNT, MSC, PHD, J. DEVRIES³ BSC, MSC, PHD, J. MORRISSEY⁴ RPN, RGN, BSC, MSC, P. CALLAGHAN⁵ RMN, BSC, MSC, PHD, D. RYAN⁶ RPN, RGN, RNT, BSC, PHD, H. GIJBELS⁷ RPN, RNT, BEd, MN, PHD & M. NASH⁸ RPN, BSC, MSC

¹Lecturer in Mental Health Nursing, ²Head of School, ³Lecturer in Psychology, ⁴Lecturer in Mental Health Nursing, ⁵Lecturer in Mental Health Nursing, School of Nursing & Midwifery, Trinity College Dublin, Dublin, ⁶Dean of Postgraduate Studies, Faculty of Counselling & Psychotherapy, National Counselling & Psychotherapy Institute of Ireland, Limerick, ⁷Lecturer in Mental Health Nursing, School of Nursing & Midwifery, University College Cork, Limerick, Ireland, and ⁸Professor of Mental Health Nursing, Faculty of Medicine & Health Sciences, University of Nottingham, Nottingham, UK

CHRONIC ILLNESS

a) promoting and improving the health of the population and reducing the risk factors that contribute to the development of chronic illnesses and

b) promoting structured and integrated care that improves outcomes and quality of life for those living with chronic illnesses.

PALLIATIVE AND SUPPORTIVE CARE SUBGROUP

Health Policy 115 (2014) 68–74



ELSEVIER

Contents lists available at [ScienceDirect](#)

Health Policy

journal homepage: www.elsevier.com/locate/healthpol



Policy analysis: Palliative care in Ireland[☆]



Peter May^{a,*}, Geralyn Hynes^a, Philip McCallion^{a,b}, Sheila Payne^{a,c},
Philip Larkin^d, Mary McCarron^a

^a School of Nursing and Midwifery, Trinity College Dublin, D'Olier Street, Dublin 2, Ireland

^b School of Social Welfare, University at Albany, State University of New York, 1400 Washington Avenue, Albany, NY 12222, United States

^c International Observatory on End of Life Care, Division of Health Research, Faculty of Health and Medicine, Boland Tower South, Lancaster University, Lancaster LA1 4YT, United Kingdom

^d School of Nursing, Midwifery and Health Systems, UCD Health Sciences Centre, University College Dublin, Belfield, Dublin 4, Ireland



ELSEVIER

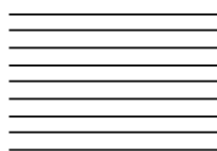
The Journal of Emergency Medicine, Vol. 46, No. 4, pp. 495–506, 2014

Copyright © 2014 Elsevier Inc.

Printed in the USA. All rights reserved

0736-4679/\$ - see front matter

<http://dx.doi.org/10.1016/j.jemermed.2013.08.114>



Selected Topics: Prehospital Care

A RANDOMIZED CONTROLLED TRIAL TO REDUCE PREHOSPITAL DELAY TIME IN PATIENTS WITH ACUTE CORONARY SYNDROME (ACS)

Mary Mooney, MSc,^{*} Gabrielle McKee, PhD,^{*} Gerard Fealy, PhD,[†] Frances O' Brien, MA,^{*}
Sharon O'Donnell, PhD,^{*} and Debra Moser[‡]

^{*}School of Nursing and Midwifery, Trinity College Dublin, Dublin, Ireland, [†]School of Nursing, Midwifery and Health Systems, University College Dublin, Belfield, Dublin, Ireland, and [‡]College of Nursing, University of Kentucky, Lexington, Kentucky

Reprint Address: Mary Mooney, MSc, School of Nursing and Midwifery, Trinity College Dublin, 24 D'Olier Street, Dublin 2, Ireland

POPULATION HEALTH , HEALTHCARE AND INNOVATION

Population and community health

Sexual health

International Journal of Biomathematics
Vol. 6, No. 6 (2013) 1350046 (13 pages)
© World Scientific Publishing Company
DOI: 10.1142/S1793524513500460



A NOVEL APPLICATION OF A CLASSICAL METHOD FOR CALCULATING THE *BASIC REPRODUCTIVE NUMBER, R_0* FOR A GENDER AND RISK STRUCTURED TRANSMISSION DYNAMIC MODEL OF HUMAN PAPILLOMAVIRUS INFECTION

KATY TOBIN

*Academic Unit of Neurology
Trinity College Dublin, Dublin 2, Ireland
katy.tobin@tcd.ie*

CATHERINE COMISKEY

*School of Nursing and Midwifery
Trinity College Dublin, Dublin 2, Ireland
catherine.comiskey@tcd.ie*

CENTRE FOR PRACTICE & HEALTHCARE INNOVATION

CPHI

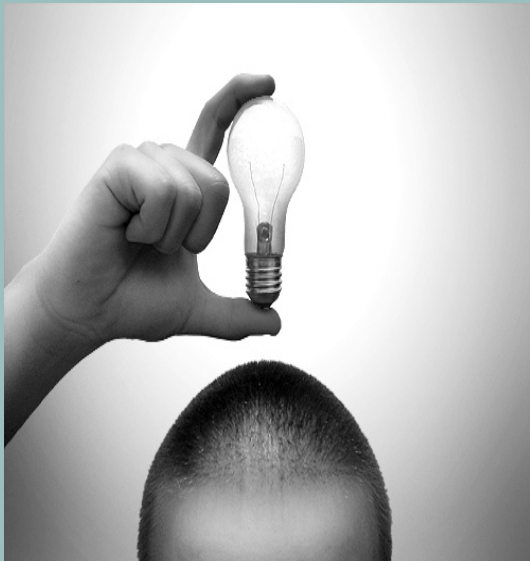
The CPHI seeks to:

Support **practice based** research and innovation

Foster **partnership** with stakeholders to find innovative solutions for everyday living

Support clinicians in the **translation** of innovative ideas into benefits for the health care system

Build **research capacity** among clinicians in practice



Research Article

Using Action Research and Peer Perspectives to Develop Technology That Facilitates Behavioral Change and Self-Management in COPD

Catherine McCabe,¹ John Dinsmore,¹ Anne Marie Brady,¹ Gabrielle Mckee,¹ Sharon O'Donnell,¹ and David Prendergast²

¹School of Nursing & Midwifery, Trinity College Dublin, 24 D'Olier Street, Dublin 2, Ireland

²Intel Ireland Ltd., Collinstown Industrial Park, Leixlip, County Kildare, Ireland



St James's Hospital

Haematology Oncology

Telephone Triage Guidelines

Amy Nolan, Norma Daly, Emma Rowan

Haematology Oncology Day Ward, St James's Hospital,
James Street, Dublin 8.

Editors

Mr. Ángel Martínez-Cavero (TSB)
Dr Hazel Boyd (Designability)
Prof. Paolo Remagnino (KU)

Authors (alphabetical order)

Ms. Barbara Clyne (TCD)
Prof. Barbara Piersonek (KU)
Mrs. Carmen-Nuria Gonzaga-Chorro (ISI)
Prof. Catherine Comiskey (TCD)
Dr D.N. Monekoso (KU) Mr.
Daniel Heery (CYB) Dr
Francisco Flórez (KU)
Ms. Helena Fortune (TER)
Mr. James Doyle (TER)
Dr John Dinsmore (TCD)
Mr. Juan-Mario Lecumberri-Ciáuriz (ISI)
Mr. Juan-Pablo Lázaro-Ramos (TSB)
Mr. Kevin Cullen (TCD)
Ms. Mar Arego-Fernández (ISI)
Prof. Mary Chambers (KU and St. George's University of London)
Dr Nigel Harris (Designability)
Ms. Sarah Delaney (TCD)
Dr Xerxa Kantaris (KU and St. George's University of London)

Graphic design

Eremme Associati

BREATHE

Because you have the right to feel good and BREATHE.

**WHITE PAPER ON NEEDS
AND REQUIREMENTS
OF AAL AND ICT SOLUTIONS
FOR INFORMAL LONG TERM
CARE OF ELDERLY PEOPLE**



Haemophilia



Haemophilia (2012), 1–6

DOI: 10.1111/j.1365-2516.2012.02885.x

ORIGINAL ARTICLE

The development of a patient partnership programme and its impact on quality improvements in a comprehensive haemophilia care service

A. GROGAN,* M. COUGHLAN,† B. O' MAHONY‡ and G. MCKEE†

*National Centre for Hereditary Coagulation Disorders, St James's Hospital; †School of Nursing and Midwifery, Trinity College; and ‡Irish Haemophilia Society, Dublin, Ireland